



# everfresh

WE CONTROL ETHYLENE

## EFM 200 INSTALLATION AND OPERATING MANUAL





# everfresh

WE CONTROL ETHYLENE

---

## Specification:

**Box or Crate Size:** EFM 200 = 270mm W x 180mm D x 310mm H

**Standard Sizes:** EFM 200 = 200m<sup>3</sup> airflow per hour

**Fan Power Consumption:** EFM 200 = 0.11 Amp

**Purpose:** Designed to scrub Ethylene within a Coolroom or Distribution Centre, thus slowing ripening through Ethylene laden air.

**Effectiveness:** Independent power supply ensuring 24hr air filtration. Multiple units may be used to provide best air filtration across a large coolstore. Larger machines on wheels for easy transportation.

## On receipt of your unit, please check for:

- Metal machine with a drawer (perforated tray)
- Power cord to connect to a 230V supply
- Wall mount bracket

Test that the fan operates freely by connecting to a power supply and switching on the power to the unit.

## Installation:

Using the wall mount bracket, Install the unit at approximately at half the height of the room, or at 1.5m height where it can be accessed for replacing the filter media. The preferred mounting position is directly below the coolrooms evaporator unit or at the opposite end of the room in direct line with the airflow. Ensure that the unit does not operate in a dead zone, i.e. in a corner where air circulation is not effective. For application support, please contact your supplier or [info@everfreshpartners.com](mailto:info@everfreshpartners.com)



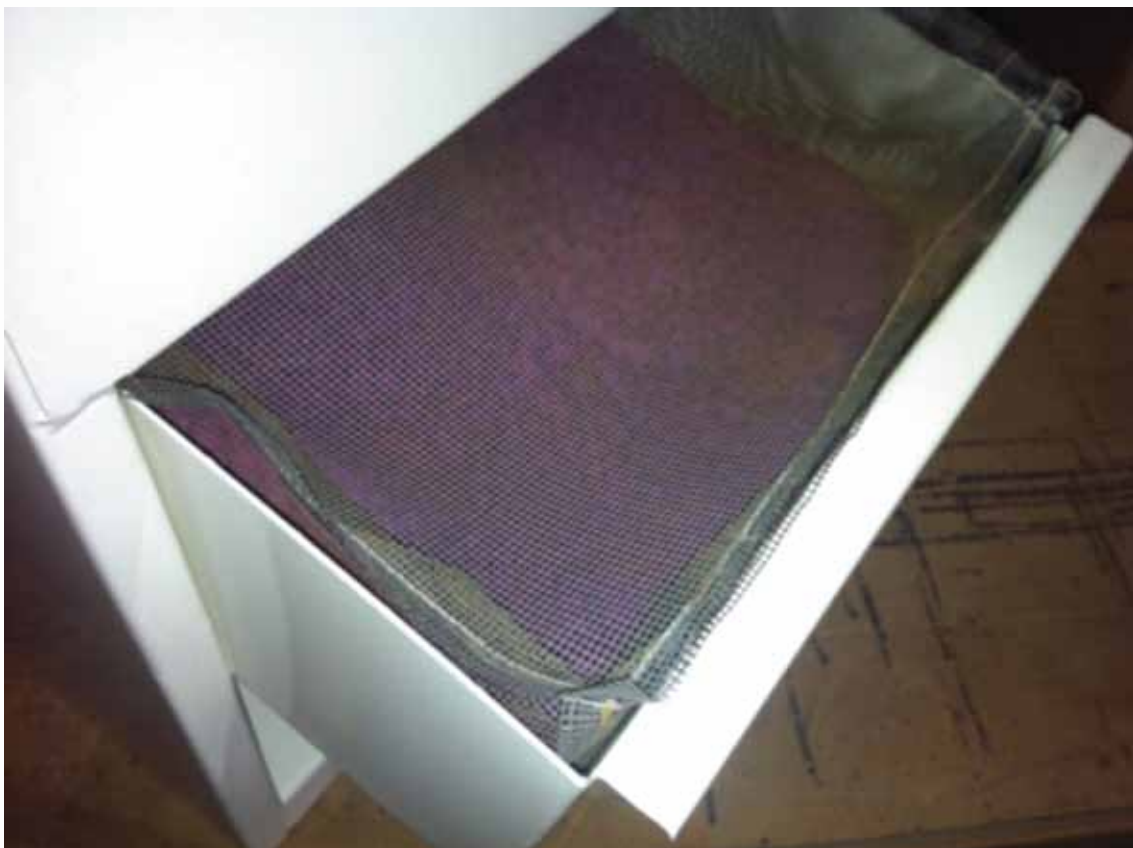
# everfresh

WE CONTROL ETHYLENE



Connect to a 240volt, 10 amp RCD protected power supply with certified electrical wiring installation.

Open the media tray and insert a 2kg media bag after removing it from its plastic protective cover.





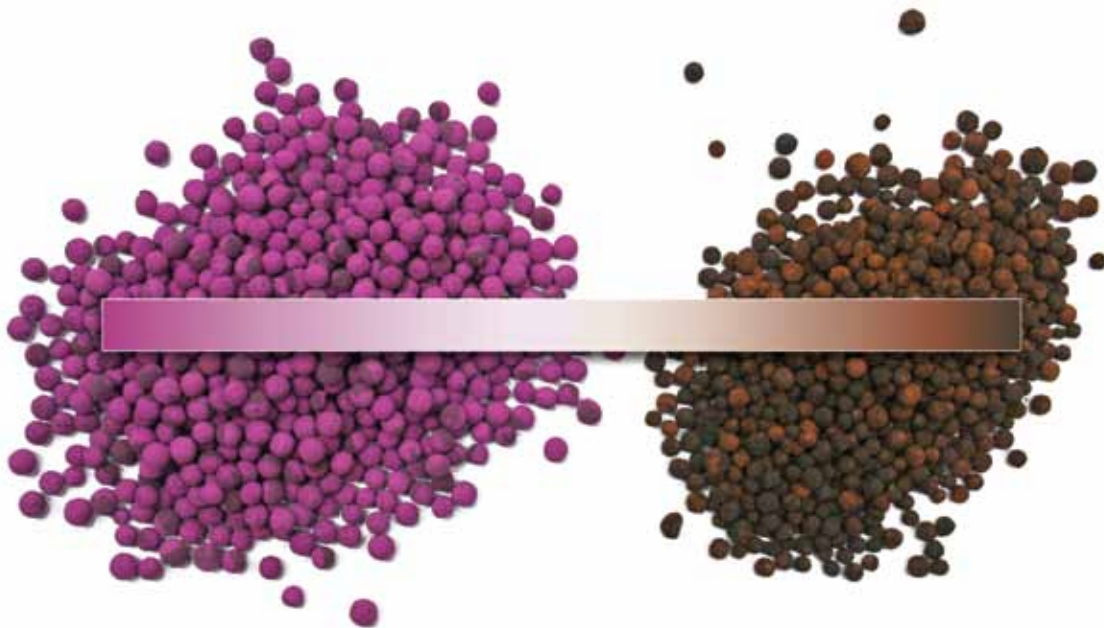
# everfresh

WE CONTROL ETHYLENE

## Operation:

As soon as the Everfresh machine is operational with the media active, it will begin to purify the air in your coolstore, eliminating ethylene and other gases that affect the quality and shelf-life of all fresh produce. Our machines provide forced-air circulation into ethylene-rich air that is present.

The Active Media becomes saturated with Ethylene as the molecules pass through the media. As a natural consequence of this chemical reaction, the Active Media begins to turn from bright purple in colour through to a dark brown when totally saturated. The Active Media is firstly discoloured on the outside surface and becomes further discoloured internally as the outer layers become totally saturated with Ethylene.



## Service:

To ensure continuous protection, it is essential that on a timely basis, a very small sample of Active Media be taken from the filters where possible and crushed to expose the inner surface to determine the internal colour properties. If the media still shows purple or reddish colours, the media is still active. If the media is pale to dark brown, the media is approaching or is at the end of its active life.



# everfresh

WE CONTROL ETHYLENE

For our customers, we use Ethylene absorption calculations using basic information supplied by our clients, to enable us to project the life of the Active Media within the type and size of machine in that installation. This enables us to actively support machines in a timely manner as required or ship required Active Media to the customer as required.

## End of Life 'Active Media' Disposal:

The active media consumable (2kg bag) turns into a rich potassium fertiliser source at the end of its life. This can be disposed off in rubbish or ideally, spread over a Mango, Kiwifruit, Avocado or similar orchard. Please see the Material Safety Data Sheet for effects on humans, animals and the environment.



EFM200 IOM Ver: 1 Date: 15/04/2013 Author: PD Approved: AM

End of Document